

Interconnect your devices into the power supply system!



If your power system consisting of UPS, inverters, motor generators, switches, switchgears is vast, or its monitoring has several mutually incompatible software and just want to have everything in one place and under control, in that case the monitoring software GLOBMON is just what you need. Many years of experience with implementation and monitoring of power systems are your guarantee of quality solution.

GLOBMON monitoring software is designed to collect and evaluate information from various types of devices through various communication interfaces. It will help you orientate yourself in the countless number of data that is provided by the equipment, and sort out the information according to your needs. It has graphically smooth and transparent user-friendly interface. GLOBMON gives you opportunity to be informed even if you are not currently present, either by email or SMS communication.

Protocol support as SNMP and Modbus TCP ensures its wide use in practice.

GLOBMON will help you have your monitored devices under control 24 hours, 7 days a week. In case of failure you will have sufficient information based on historical events, historical measured data and trends to get the fast and efficient service. GLOBMON as a powerful monitoring tool with more than 10 years of existence will allow a quick economic return on your investment in a short term.



EXPRESS

It is the basic version, which easily satisfies all end users who need to monitor ELTECO equipment such as UPS, inverters, DC sources and backup systems, and other products of the ELTECO company. The new generation of this software allows connection via Ethernet communication interface and enables complete device management. Besides the basic features which are expected from such software, supported is well arranged graphical interface with maps and other user-friendly tools.

PROFESSIONAL

This version is a major contribution for administrators or dispatch centers, where in addition to basic features have been added powerful tools to create reports, view trends, support for NETbridge technology for safe monitoring over the Internet. This version is already a client-server solution, where multiple access is limited only by the maximum number of licenses. It is also possible to create groups of monitored devices, which provide personalized access to devices and data.

ULTIMATE

Ultimate version also supports module for graphical display of measured values and trends. All options in this version are granted without any limitation. It is also ready to support devices from other manufacturers that support SNMP protocol. This software package is ideal for executive users and system integrators of power systems.

Edition	EXPRESS	PROFESSIONAL	ULTIMATE
Maximum number of devices	50 (5 included in price)	400 (5 included in price)	unlimited ¹⁾ (5 included in price)
Maximum number of users	5 (1 included in price)	25 (1 included in price)	unlimited ¹⁾ (1 included in price)
Number of working stations	1	10	unlimited ¹⁾
Number of user groups	1	5	unlimited ¹⁾
Client – server architecture	✓	✓	✓
All supported devices allowed	✓	✓	✓
UPS monitoring through RFC1628	✓	✓	✓
Status history	✓	✓	✓
E-mail notification	✓	✓	✓
SMS notification	✓	✓	✓
User interface enabling personalization	✓	✓	✓
Interactive on-line map supporting documents ²⁾	✓	✓	✓
Logging and display of curves of measured values	✗	✓	✓
Reports generating	✗	✓	✓
SNMP agent ²⁾	✗	✗	✓
Minimum recommended SQL server version	MS SQL Server 2005 Express	MS SQL Server 2005 Express	MS SQL Server 2005 Standard ³⁾

1) - limited by actual technical possibilities 2) - not included in GlobMon software bundle

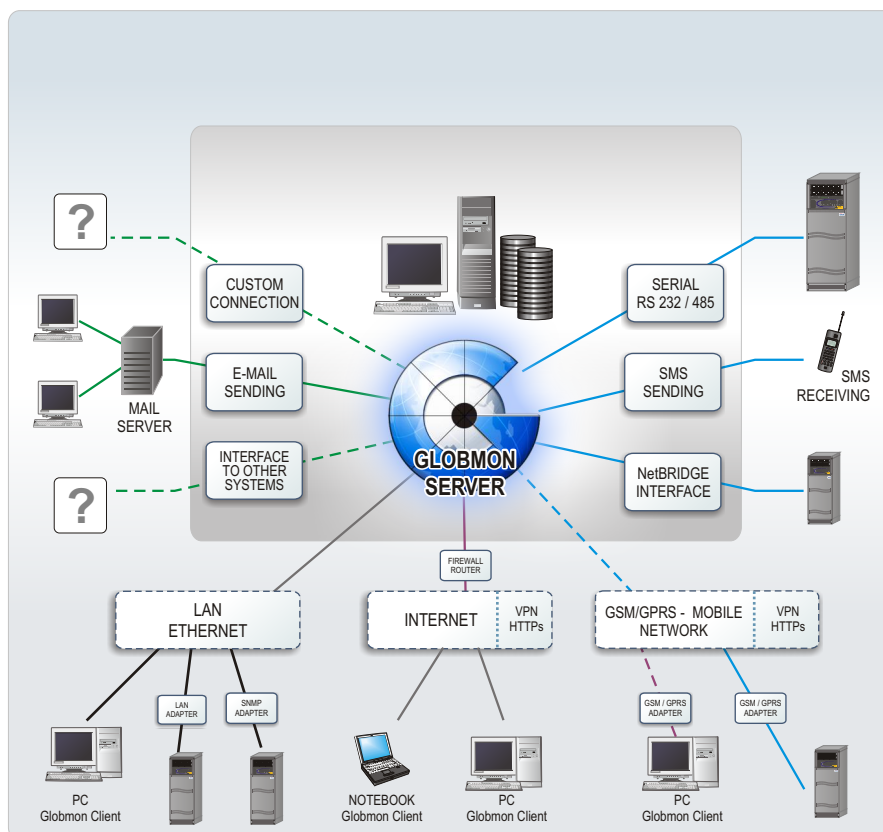
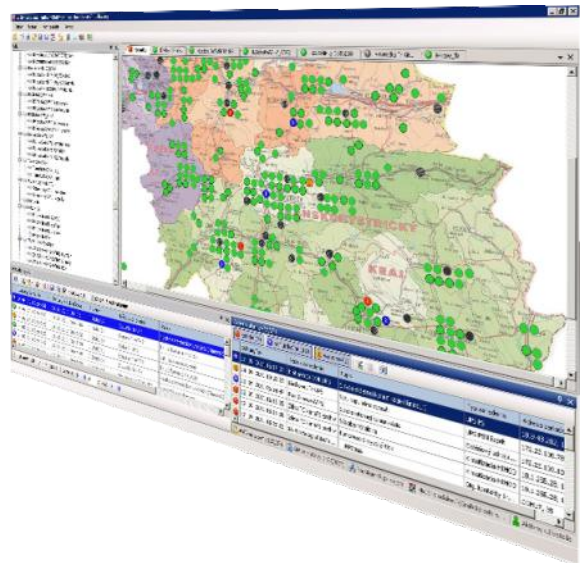
Key features and benefits	
Monitoring of your entire power system from one service center	Just configure the system and all graphical advantages are just where you need it. All you need is a link to the server.
Data in real-time and history of data	Specifies the data analysis and historical events analysis
SMS and e-mail notification	The system will highlight any failure

USER INTERFACE

The philosophy of the software is to enable the user to process the data clearly and transparently, to enable quick and accurate analysis of the arisen situation. Accordingly, the user can create a hierarchal presentation with almost no restrictions.

COMMUNICATION POSSIBILITIES

GLOBMON gives a great support and possibility to connect the devices with the system and contains nearly all protocols and connectivity options.



Communication protocols

relay contacts (free / potential)

with assistance of HC type devices is possible to monitor any number of them

RS 232 / 485 / 422

MODBUS

UPSCom 2 / 3

private protocol of ELTECO company

MODBUS TCP

TCP IP

SNMP

SMTP

HTTP / HTTPs

GSM / GPRS / EDGE



is software package consisting of 2 parts:

GlobMon Server

which allows:

- Continuous monitoring of the status of several dozen types of devices supported
- Creating a history of states and its storage in a database for easy and effective access
- Sending information about the current state via e-mails and SMS messages
- Creating a data history of selected device parameters
- Optimized and configurable communication profiles to minimize data transfer with the devices
- Services of SNMP agent to share information with other monitoring systems
- Configurable communication interface for communication with remote clients
- User friendly interface for configuration and management

GlobMon Client

which allows:

- Creation of logical structure and hierarchy of monitored devices and its clear graphical representation
- Clear and configurable system for displaying the current status of monitored devices
- Graphical and audio indication of change in monitored device
- Detailed monitoring and configuration by specialized applications for each type of device
- Graphical display of data history of selected parameters
- Hierarchical user management and detailed configuration of authorizations

SYSTEM REQUIREMENTS

Supported Operating Systems:

Windows Server 2003/Windows Server 2008/Windows XP SP2/Windows Vista/Windows 7

Note: Preferred Operating System for ELTECO GlobMon Server is Windows Server 2008

Hardware:

- **Processor:** 2 GHz or faster
- **RAM:** 1GB or more
- **Hard Disk:** 1GB or more
- **DVD-ROM drive**
- **Display:** 1024 x 768 or higher res. with 256 colors
- **Network card** with 100 Mb interface
- **Hardware Key**

Software:

- Microsoft .NET Framework 3.5 SP1
- Microsoft Visual C++ 2005 SP1 Redistributable Package (x86)*
- Microsoft Visual C++ 2008 SP1 Redistributable Package (x86)*
- Microsoft Windows Installer minimum version 3.1
- * *Requires only ELTECO GlobMon Server*

© 2011 ELTECO, a.s. All rights reserved. The ELTECO ® logo and the GlobMon ® logo are registered trademarks of ELTECO, a.s.



ELTECO, a.s.
Rosinská cesta 15
010 08 ŽILINA
SLOVAKIA

tel.: 041-5066601
041-5066111
fax: 041-5650104

obchod@elteco.sk
www.elteco.sk

global monitoring software

